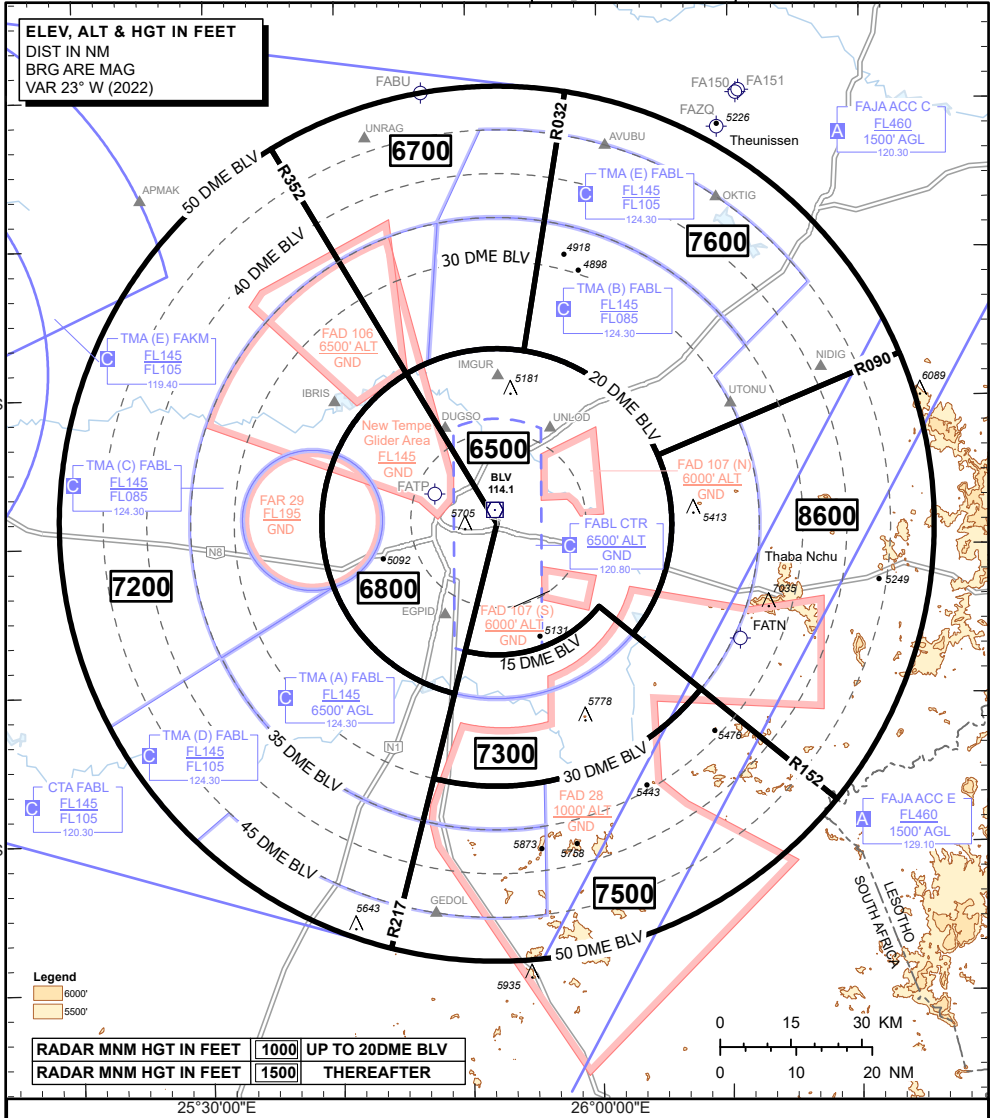


ATC SURVEILLANCE **AERODROME ELEV 4457'**
MINIMUM ALTITUDE **TRANSITION ALT 8000'**
CHART

RADAR APP: 120.10
 TWR: 120.80
 ATIS: 126.45
 FAJA ACC C: 120.30
 FAJA ACC E: 129.10

BLOEMFONTEIN
BRAM FISCHER (INTL)
FABL

ELEV, ALT & HGT IN FEET
 DIST IN NM
 BRG ARE MAG
 VAR 23° W (2022)



RADAR MNM HGT IN FEET	1000'	UP TO 20DME BLV
RADAR MNM HGT IN FEET	1500'	THEREAFTER

NOTE:
 Chart to be used for cross-checking of assigned altitudes only.

CHANGE: Sector Altitude update

ACSP: ATNS