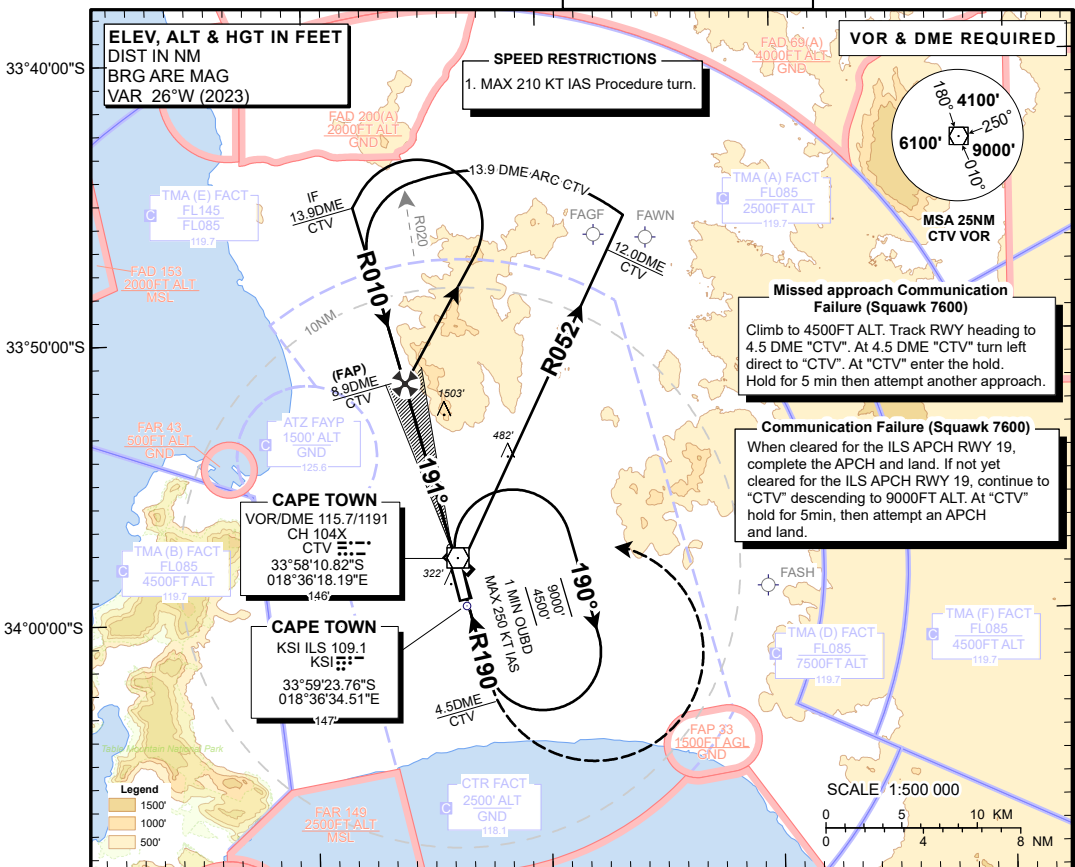


INSTRUMENT APPROACH CHART **AERODROME ELEV 151'**
 HEIGHTS RELATED TO
THR RWY 19 - ELEV 147'

APP: 119.70
 TWR: 118.10
 ATIS: 127.00
 SMC: 121.90

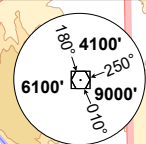
CAPE TOWN INTL
ILS Z RWY 19
 CAT C - D



ELEV, ALT & HGT IN FEET
 DIST IN NM
 BRG ARE MAG
 VAR 26°W (2023)

SPEED RESTRICTIONS
 1. MAX 210 KT IAS Procedure turn.

VOR & DME REQUIRED



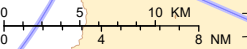
Missed approach Communication Failure (Squawk 7600)
 Climb to 4500FT ALT. Track RWY heading to 4.5 DME "CTV". At 4.5 DME "CTV" turn left direct to "CTV". At "CTV" enter the hold. Hold for 5 min then attempt another approach.

Communication Failure (Squawk 7600)
 When cleared for the ILS APCH RWY 19, complete the APCH and land. If not yet cleared for the ILS APCH RWY 19, continue to "CTV" descending to 9000FT ALT. At "CTV" hold for 5min, then attempt an APCH and land.

CAPE TOWN
 VOR/DME 115.7/1191
 CH 104X
 CTV
 33°58'10.82"S
 018°36'18.19"E

CAPE TOWN
 KSI ILS 109.1
 KSI
 33°59'23.76"S
 018°36'34.51"E

SCALE 1:500 000



CTV DME	8	6	4	2	1
ADVISORY ALT(HGT)	2921 (2774)	2242 (2095)	1563 (1416)	883 (736)	544 (397)

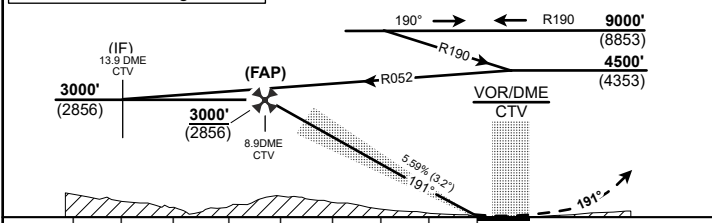
INA ALT: 4500° or higher MSA

TRANSITION ALT 7500'
 TRANSITION LEVEL ATC

MISSED APPROACH:
 Climb to 4500'. Track RWY HDG to 4.5 DME "CTV". At 4.5 DME "CTV" turn left direct to "CTV". At "CTV" enter the HOLD or as directed by ATC.

ILS RDH 57'

THR ELEV 147'



NM to/from THR RWY 19

Straight-in Approach	OCA/H	C	D	GS	KT	80	100	120	140	160	180
	With 2.5% Missed APCH Gradient										
	CAT I	1090 (943)		FAP to THR	MS	6:10	4:56	4:07	3:32	3:07	2:45
	CAT II	1140 (993)		Rate of descent	FPM	453	567	680	793	906	1020
	With 2.9% Missed APCH Gradient	CAT I	347 (200)	347 (200)	NOTE: 1. Procedure Turn Approach applicable only within 30° of the OQDB heading. Use the phraseology "Request Procedure Turn Approach". 2. WGS-84.						
	CAT II	247 (100)	254 (107)								
	RVR	550m									
	ALS OUT	1000m									

CHANGE: Approach ALT, FAP Altitude

ACSP-ATNS