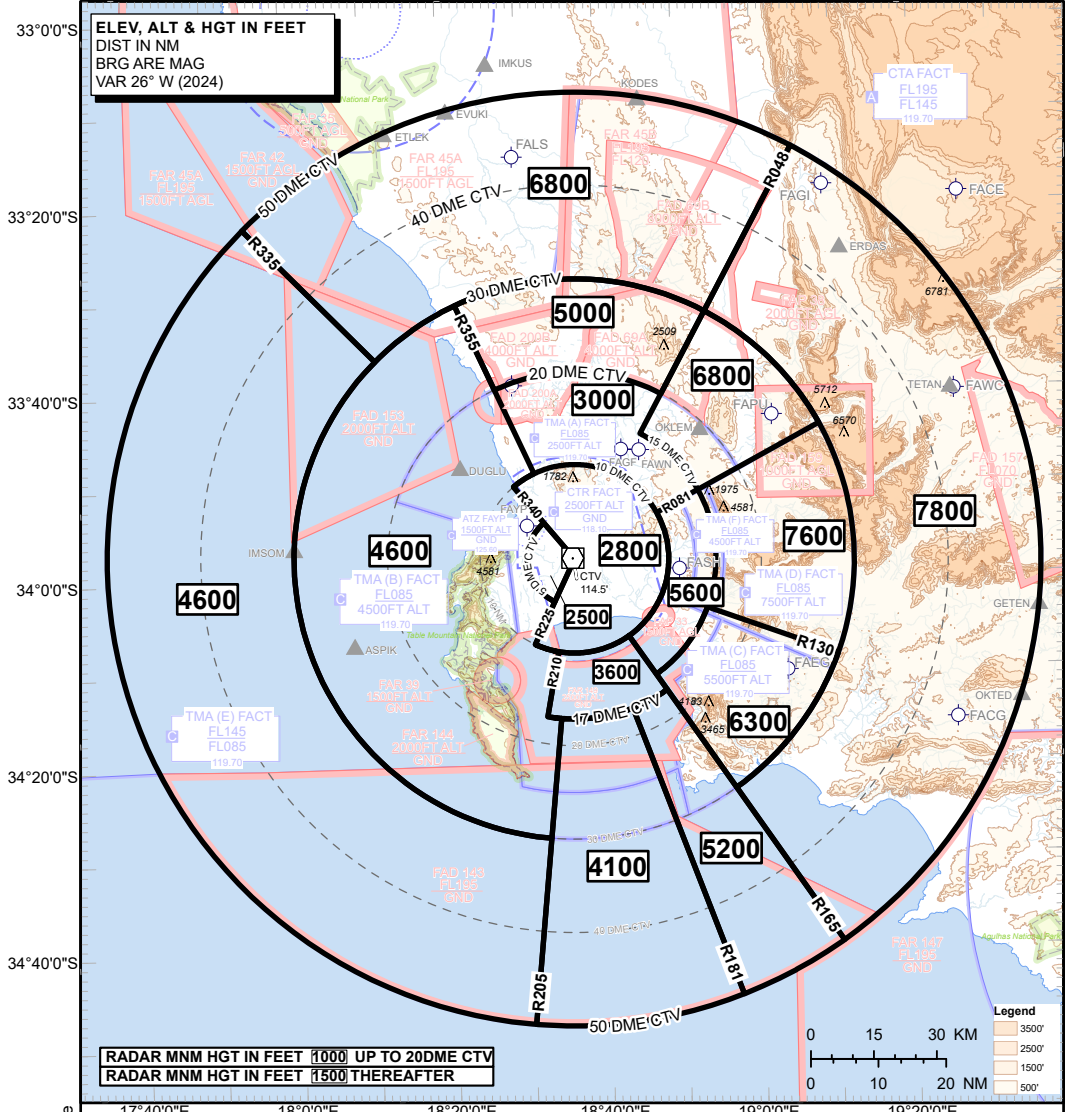


**ELEV, ALT & HGT IN FEET
DIST IN NM
BRG ARE MAG
VAR 26° W (2024)**



**RADAR MNM HGT IN FEET 1000 UP TO 20DME CTV
RADAR MNM HGT IN FEET 1500 THEREAFTER**

Legend
3500'
2500'
1500'
500'

NOTE:
Chart to be used for cross-checking of assigned altitudes only.

SECTORS UPDATE
SECTOR ALTITUDES UPDATE

ACSP: ATIS