

INSTRUMENT AERODROME ELEV 3548'
APPROACH CHART
 HEIGHTS RELATED TO
 AD - ELEV 3548'

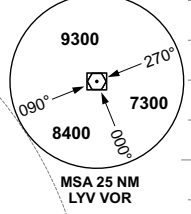
LADYSMITH TIBA 124.80

LADYSMITH
VOR RWY 11/29



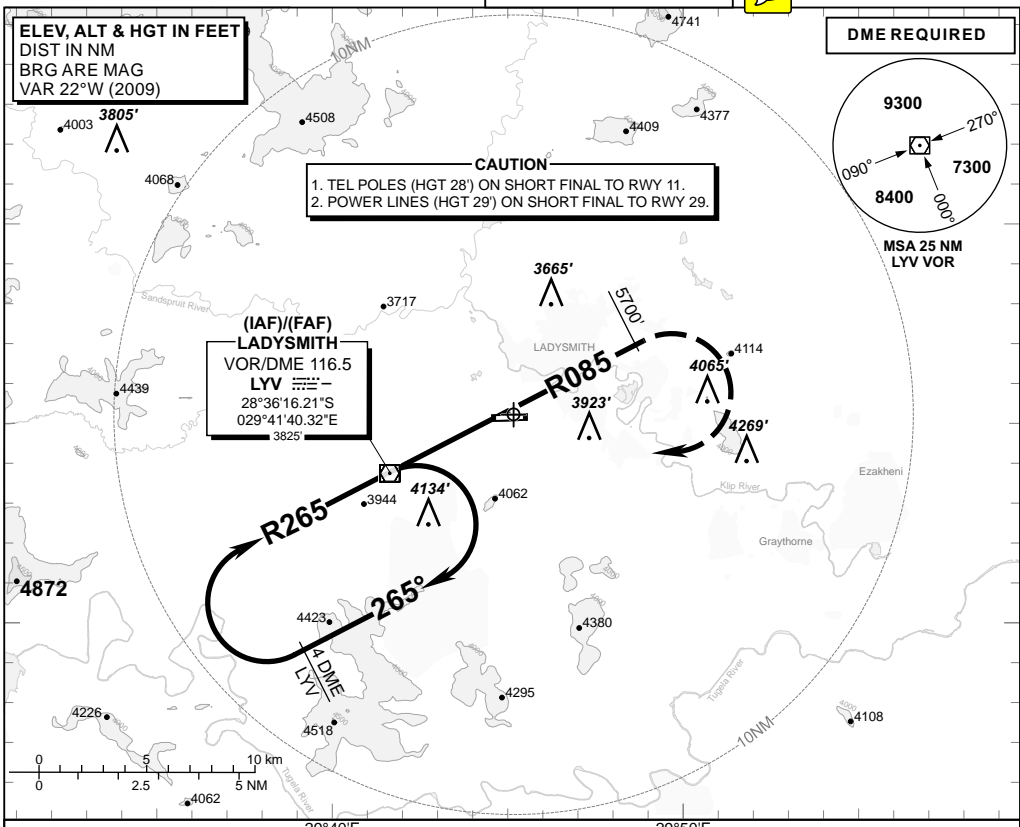
ELEV, ALT & HGT IN FEET
 DIST IN NM
 BRG ARE MAG
 VAR 22°W (2009)

DME REQUIRED



CAUTION
 1. TEL POLES (HGT 28') ON SHORT FINAL TO RWY 11.
 2. POWER LINES (HGT 29') ON SHORT FINAL TO RWY 29.

(IAF)/(FAF)
LADYSMITH
 VOR/DME 116.5
 LYV
 28°36'16.21"S
 029°41'40.32"E

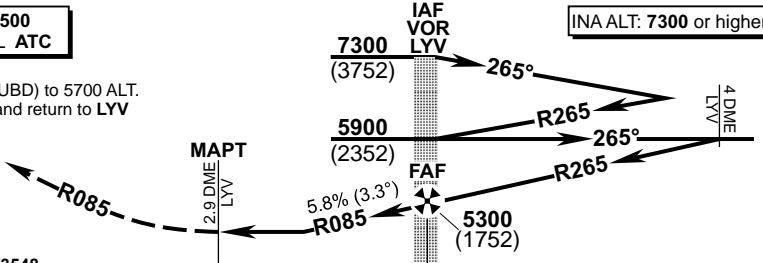


LYV VOR/DME	2.5	2	1.5	1	0.5
ADVISORY ALT (HGT)	4430 (882)	4600 (1052)	4775 (1227)	4950 (1402)	5125 (1577)

TRANSITION ALT 9500
TRANSITION LEVEL ATC

INA ALT: 7300 or higher MSA

MISSED APPROACH:
 Climb on R085 LYV (OUBD) to 5700 ALT.
 At 5700 ALT turn right and return to LYV
 climbing to 5900 ALT.



THR 11/29 ELEV 3485/3548
 NM to/from THR RWY 11

			GS	KT	80	100	120	140	160
OCA (H)			FAF-MAPT 2.9NM	M:S	2:11	1:44	1:27	1:15	1:05
Straight-in Approach				Rate of descent	FPM	467	584	701	818
				NOTE: 1. Descend in the hold to 5900 ALT.					
Circling		4470 (922)	4470 (922)						
Circling (N of RWY 11/29)		4260 (712)	4260 (712)						

CHANGE: Procedure Name