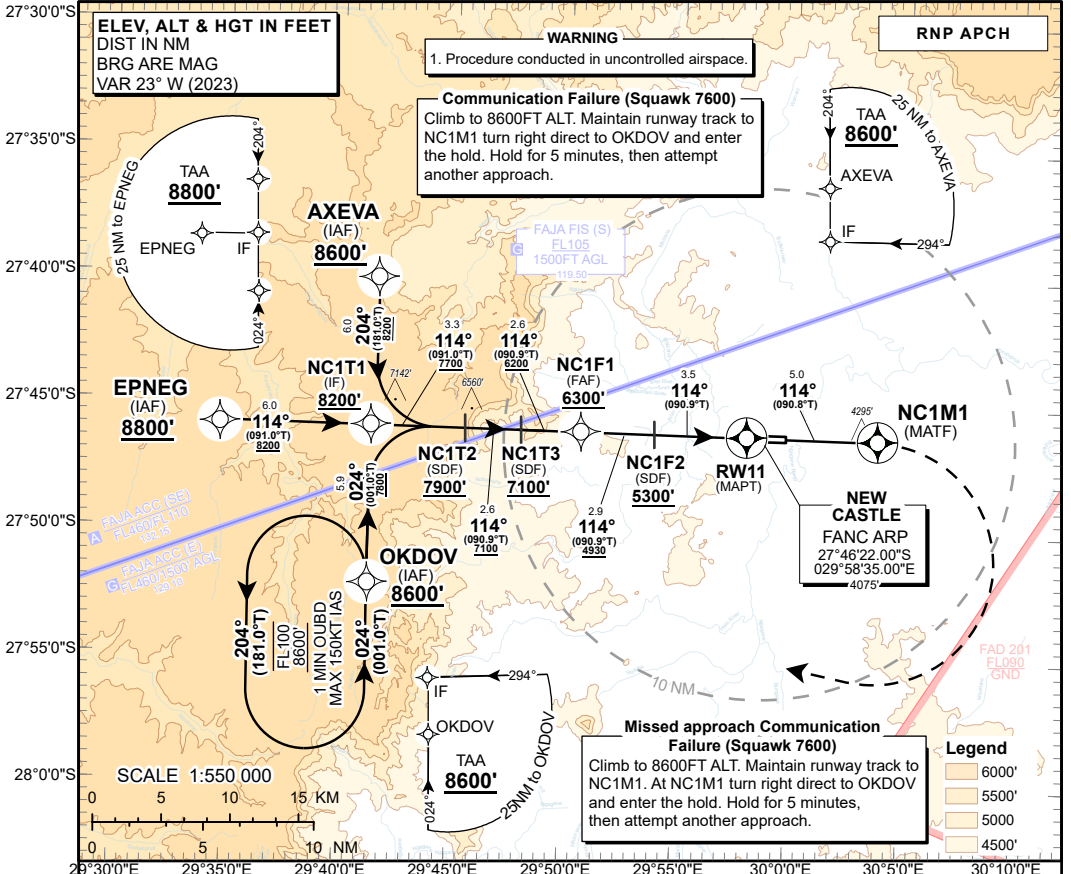


**INSTRUMENT APPROACH CHART** **AERODROME ELEV 4075'**  
 HEIGHTS RELATED TO **THR RWY 11 ELEV 4074'**

FAJA FIS (S): 119.50  
 FAJA ACC (E): 129.10  
 FAJA ACC (SE): 132.15

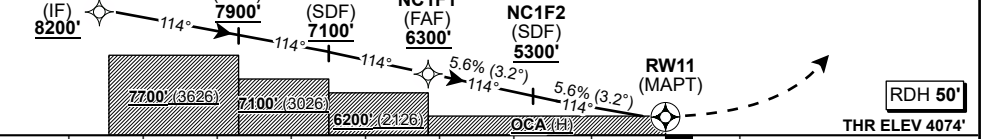
**NEW CASTLE RNP RWY 11**  
 CAT A - C



<b>DIST (NM) to RW11</b>	5	4	3	2	1
<b>ADVISORY ALT(HGT)</b>	5830 (1756)	5490 (1416)	5150 (1076)	4810 (736)	4470 (396)

**TRANSITION ALT 9500'**  
**TRANSITION LEVEL ATC**

**MISSED APPROACH:**  
 Climb to 8600FT ALT. Maintain runway track to NC1M1. At NC1M1 turn right direct to OKDOV and enter the hold. Hold for 5 minutes, then attempt another approach.



		OCA/H			NM to/from THR RWY 11											
		A	B	C	GS	KT	80	100	120	140	160	180	200	220		
Straight-in Approach	LNAV With 2.5% Missed APCH Gradient	5190(1116)			NC1F1 to RW11	KT	4:48	3:50	3:12	2:45	2:24	2:08	1:55	1:45		
	LNAV With 3.1% Missed APCH Gradient	4510(436)			Rate of descent	FPM	453	567	680	793	906	1020	1133	1246		
	VNAV With 2.5% Missed APCH Gradient	5130(1056)			<b>NOTE:</b>											
	VNAV With 3.1% Missed APCH Gradient	4420(326)			1. LNAV RoD equivalent to 3.2° 2. Remove Altimeter Setting Source not permitted for VNAV Ops. 3. Baro/VNAV operations not authorized below -3.6° C. MAX VPA 3.5°, Temperature +35° C.											
RVR / ALS OUT		1500m	1500m	2000m												
CIRCLING		5190(1115)														

CHANGE: Profile View: MAPT reference RW11

ACSP: ATNS

