

Elev
109

OCH: Cat A,B, 501
Cat C 591

RICHARDS BAY

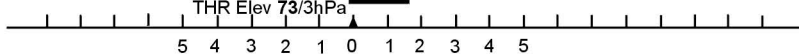
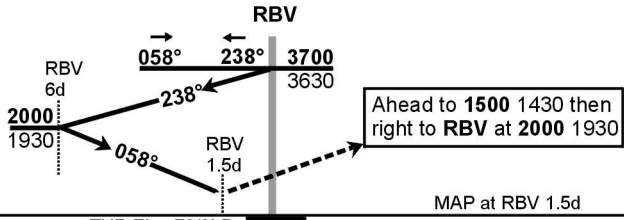
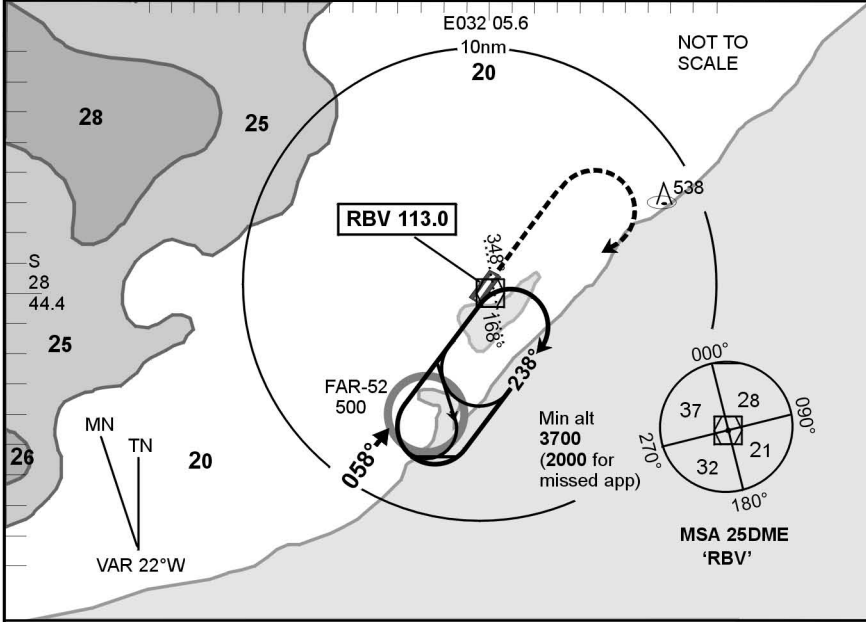
(Cat A, B, C) BREAKCLOUD VOR/DME 05

RICHARDS BAY Tower / Approach
118.9

VOR-01
EFF
08 July 04

FARB

© AV/DIRECT / 280104



T.Lev		ATC	
T.Alt		3500	
kt	fpm	6d	
200	1130	—	
180	1020	THR	
160	900	2:04	
140	790	2:21	
120	680	2:45	
100	570	3:18	
80	450	4:08	

1. Initial approach altitude 3700 or higher MSA.
2. Descend in the hold to 3700.
3. Procedure turn approach applicable only within 30° of the outbound heading. Use phraseology 'Request procedure turn approach'.
4. All circling to land maneuvers must be conducted at the pilot's discretion east of the extended runway centerline due factory complex west of aerodrome.
5. RoD computes at 3.2° angle of descent.

Advisory Alt/Hgts		
RBV VOR/DME		
6d	2000	1930
5d	1660	1590
4d	1320	1250
3d	980	910
2d	640	570

CAA South Africa

Rev: Topo clearance heights reviewed. Chart #.

WGS-84