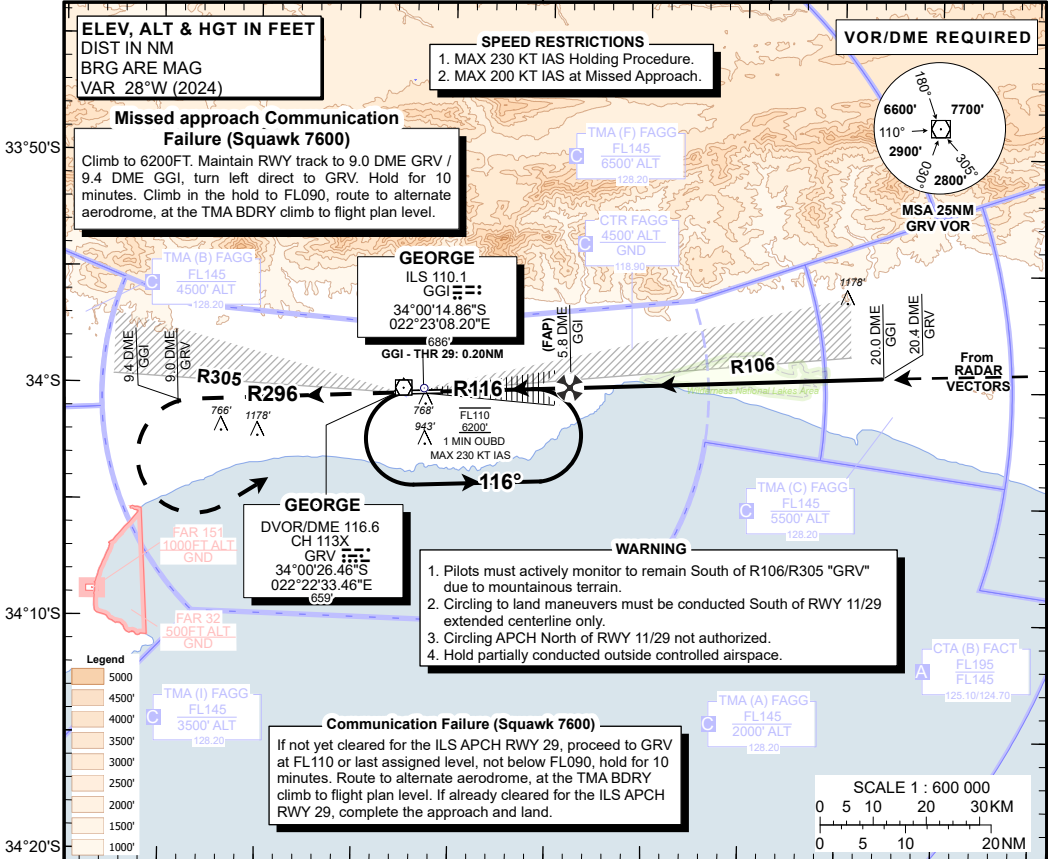


INSTRUMENT AERODROME ELEV 648'
APPROACH HEIGHTS RELATED TO
CHART - ICAO THR RWY 29 - ELEV 648'

GEORGE (FAGG)
ILS RWY 29
CAT A - D

APP: 128.20
 TWR: 118.90
 ALPHA OSCAR (APN): 122.65
 ATIS: 126.225



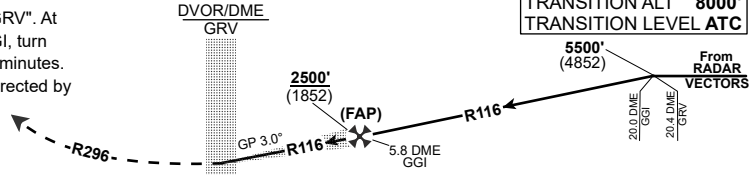
	22°10'E	22°20'E	22°30'E	22°40'E	22°50'E
THR 29	5.7	5.0	4.0	3.0	2.0
GRV VOR/DME	6.3	5.6	4.6	3.6	2.6
GGI LOC/DME	5.8	5.2	4.2	3.2	2.2
ADVISORY ALT (HGT)	2500 (1852)	2290 (1642)	1970 (1322)	1650 (1002)	1330 (682)
					1020 (372)

MISSSED APPROACH:

Climb to 6200FT on R296 "GRV". At 9.0 DME GRV / 9.4 DME GGI, turn left direct to GRV. Hold for 5 minutes. Expect radar vectors or as directed by ATC.

ILS RDH 47'
THR ELEV 648'

TRANSITION LEVEL 8000'
TRANSITION ALT ATC



	NM to/from THR RWY 29				GS	KT	80	100	120	140	160	180
	OCA/H	A	B	C								
Straight-in Approach	With 2.5% Missed APCH Gradient	CAT I	2460 (1812)		FAP to THR 29	M:S	4:15	3:24	2:50	2:26	2:08	1:53
		CAT II	2390 (1742)									
	With 3.5% Missed APCH Gradient	CAT I	1530 (882)									
		CAT II	1450 (802)									
	With 4.4% Missed APCH Gradient	CAT I	848 (200)									
With 4.5% Missed APCH Gradient	CAT II	748 (100)	748 (100)	748 (100)	749 (101)							
	RVR CAT I	500m										
	RVR CAT II	350m										
	ALS OUT	1000m										
CIRCLING SOUTH OF AD ONLY	1070 (422)	1240 (592)	1340 (692)	1340 (692)								

CHANGE: Maintenance Review

NOTE:
 1. Approach via Radar Vectors.
 2. Circle to land at the discretion of the pilot in command.

EFF: 03 OCT 24

ACSP: ATIS